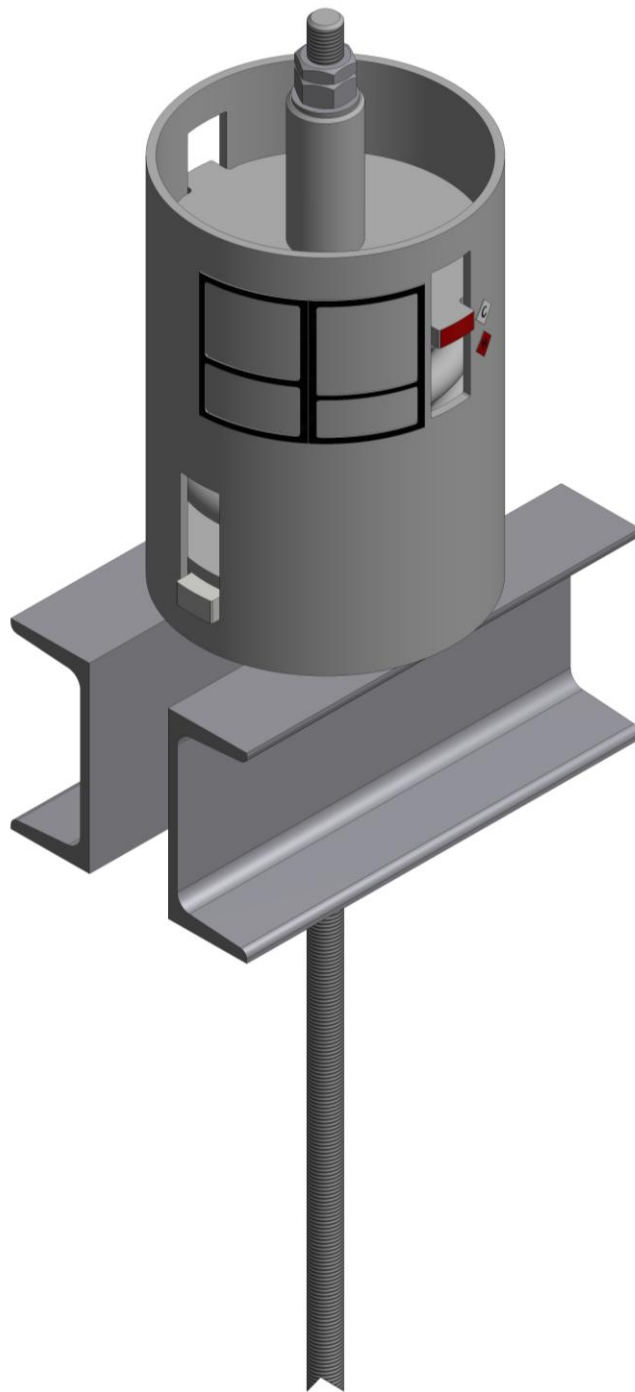
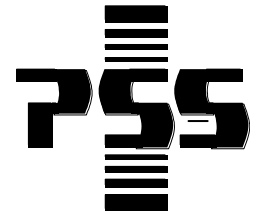


**Product and installation instructions -  
spring hanger type D**





## content

<b>1. allocation</b> .....	<b>1</b>
1.1 identification plate .....	2
<b>2. positioning</b> .....	<b>3</b>
<b>3. installation</b> .....	<b>4</b>
3.1 water pressure test .....	4
<b>4. activation</b> .....	<b>5</b>
4.1 spring position mark.....	5

## 1. allocation

the mark number (identification plate: 'Mark. No.')

must be the same as the isometric mark number.



Markierungs-Nr.

Mark. No.

Spring Rate

H.L./H.L.

K.L./C.L.

Weg/Travel

Richtung/Direct.

Load (LBS)	Defl (IN)	GB (MM)	Last (N)
2100	0	0	9343
2400	1/2		10392
2700	1	10	11443
3000	3/2		12493
3300	1	20	13544
3600	1 1/2	31,8	16014



Figur

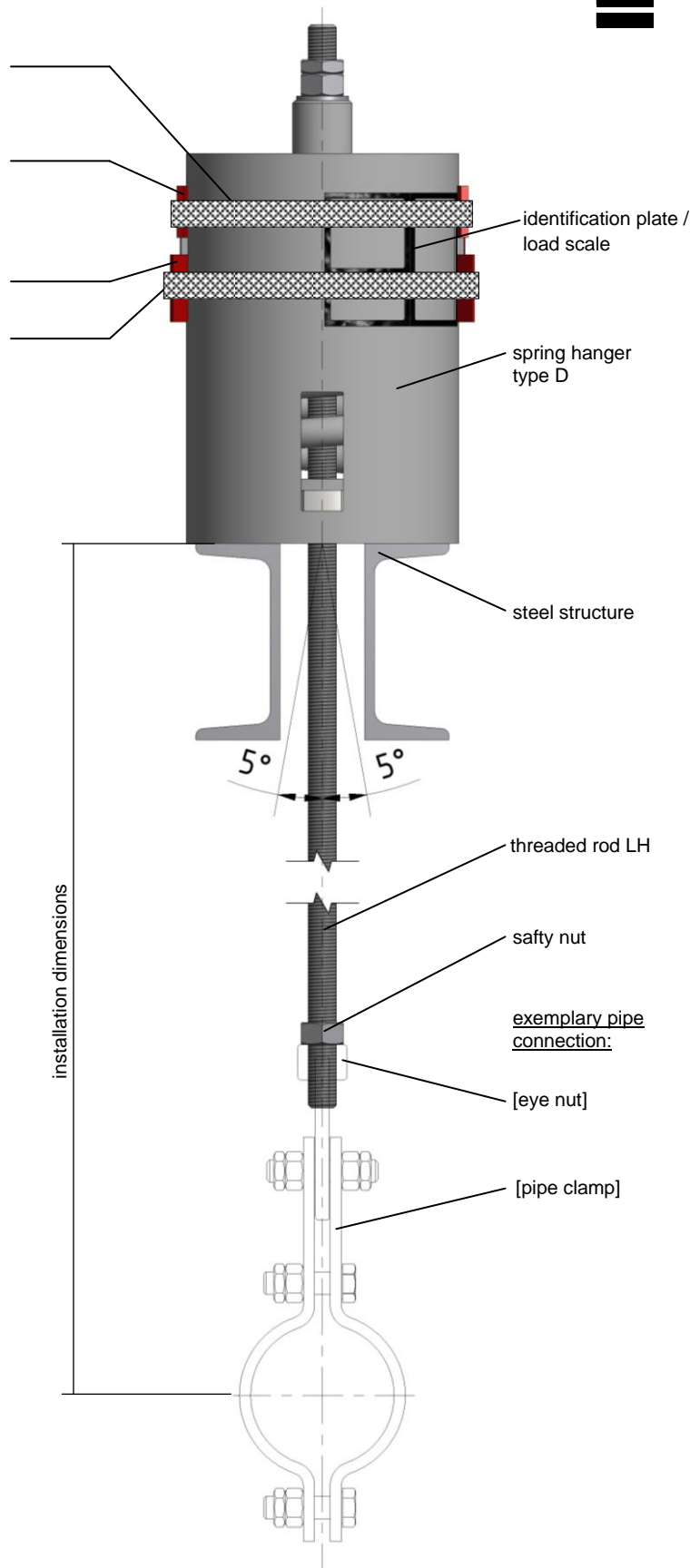
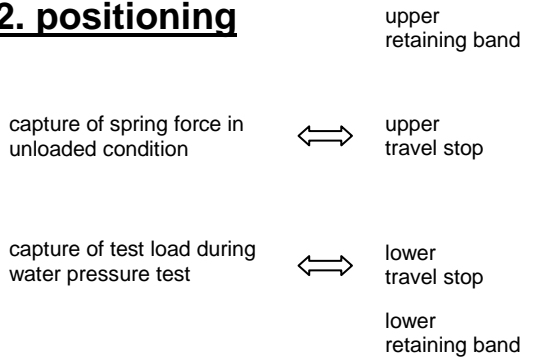
FEDERHÄNGER

Größe  Typ

image: identification plate



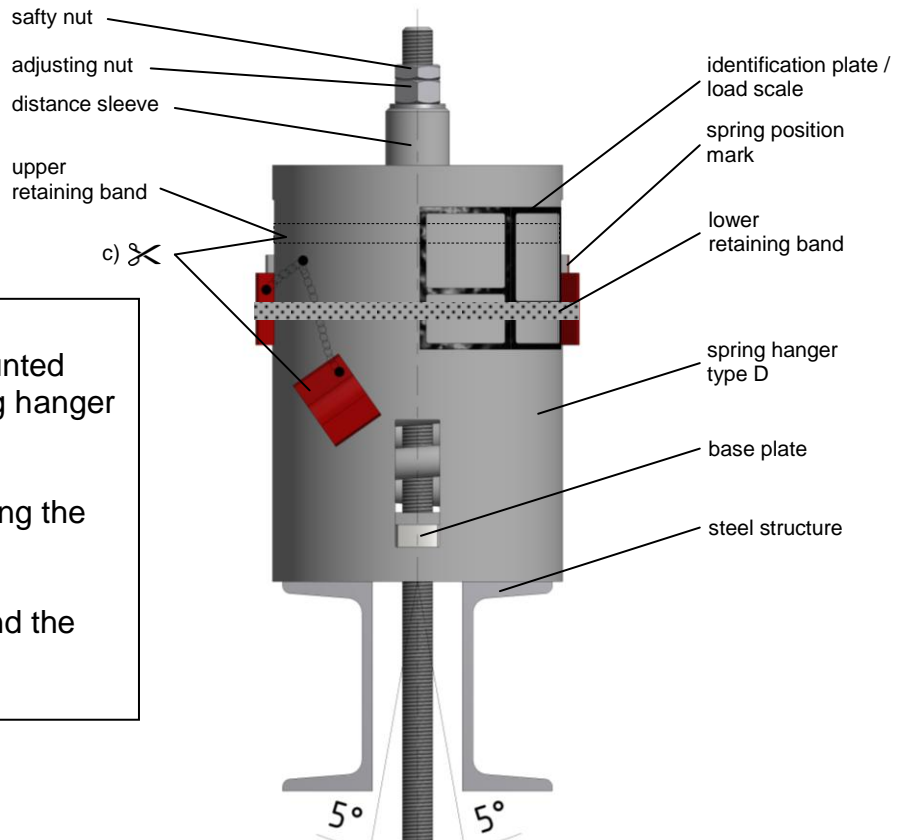
## 2. positioning



- installation dimension must be the same as in the support drawing.
- the spring hanger must be positioned centrally and tilt-proof on the steel structure.
- the threaded rod may not move more than 5° in all directions.

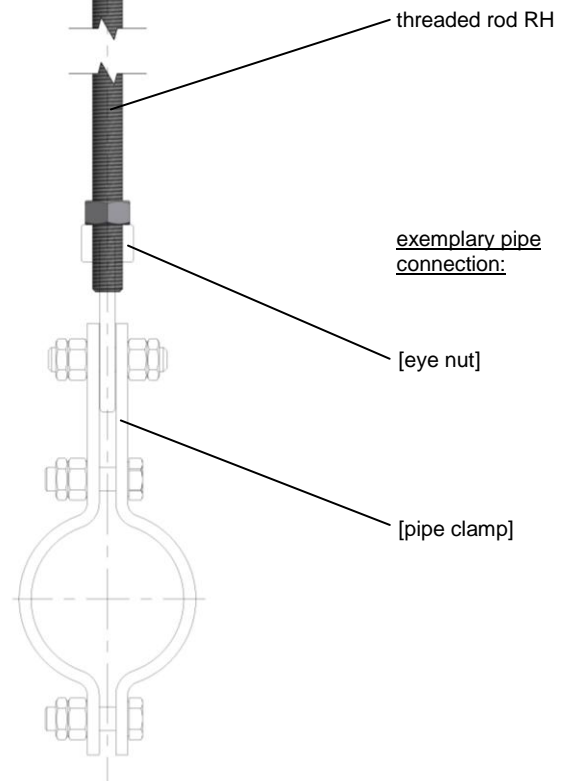
## 3. installation

- a) after the complete system was mounted rotate the turnbuckle until the spring hanger is subjected to a load.
- b) upper travel stop dissolves by loading the spring hanger.
- c) remove the upper retaining band and the upper travel stop.



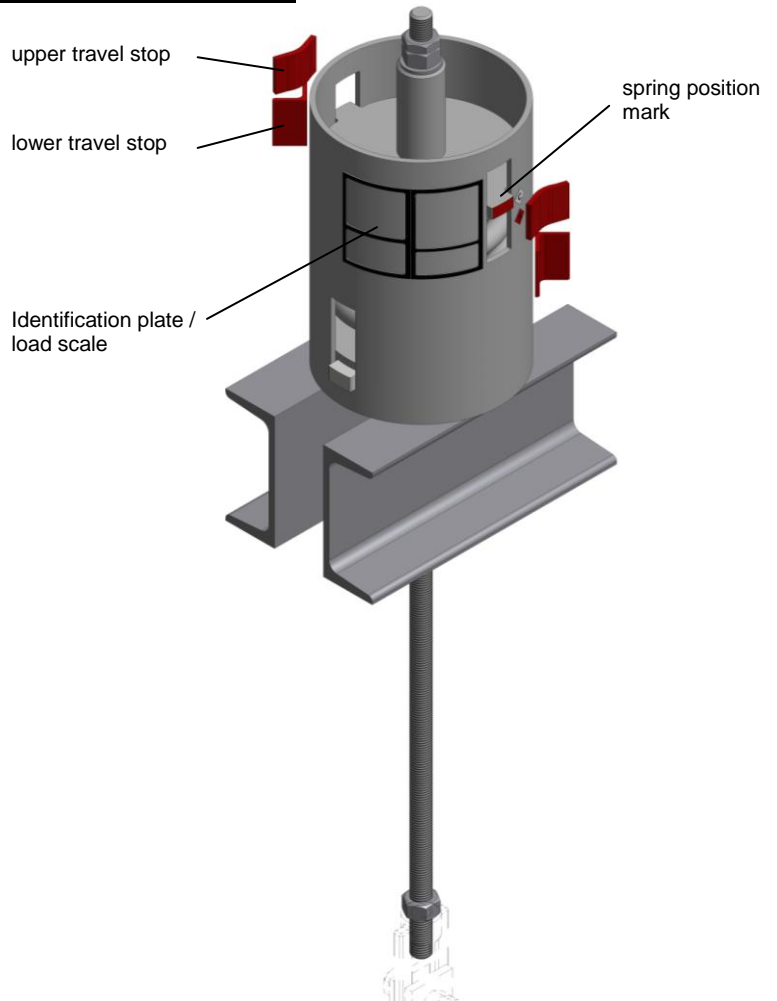
### 3.1 in case of water pressure test

- in case of water pressure test, the lower travel stop (with retaining band) must remain mounted! (necessary for handling signification loads, which emerge due the water pressure test).
- After the water pressure test has been performed, or if no water pressure test is necessary, proceed to step 4.



## 4. activation of spring hanger in case of cold system

- a) the lower retaining band and the lower travel stop must be removed.
- b) if necessary, the spring position mark must be adjusted to the  $\diamond C$  -mark by rotation the adjusting nut.
- c) when the system is in an operational status, it must be checked whether the spring position is between the  $\diamond C$  -mark and the  $\diamond H$  -mark. In case of deviation, consultation is necessary.



### 4.1 section of spring position mark in case of cold system

